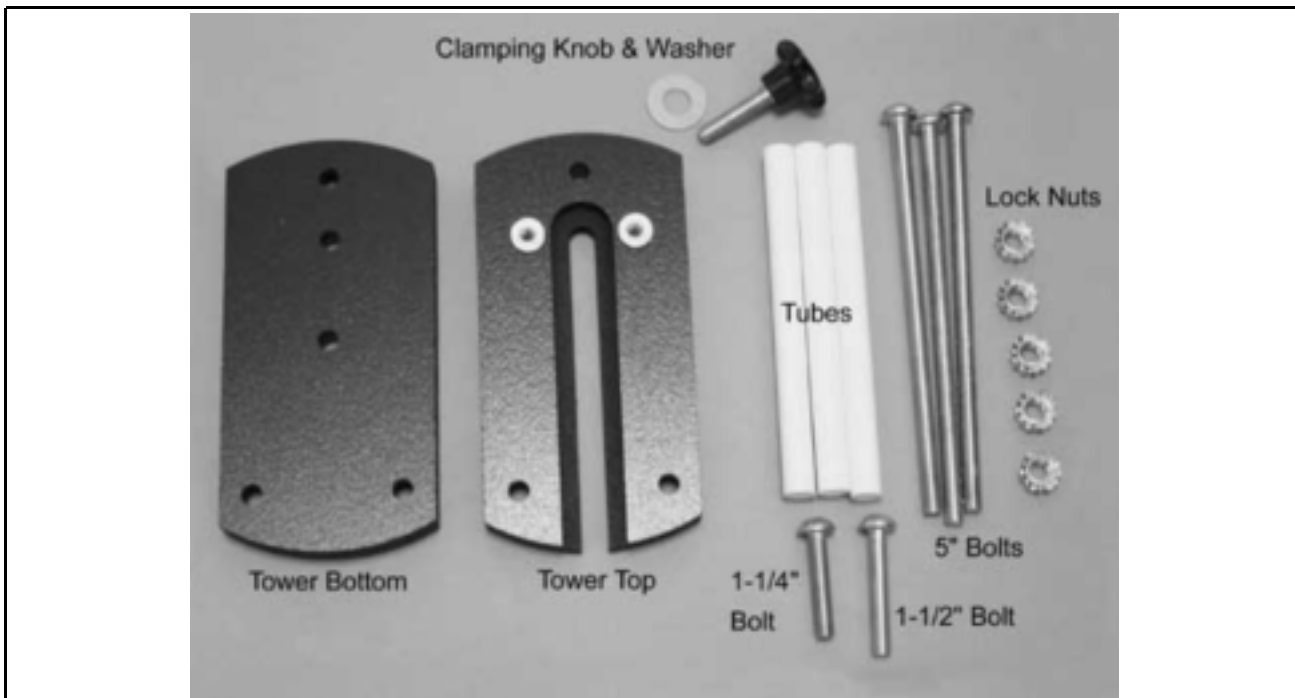
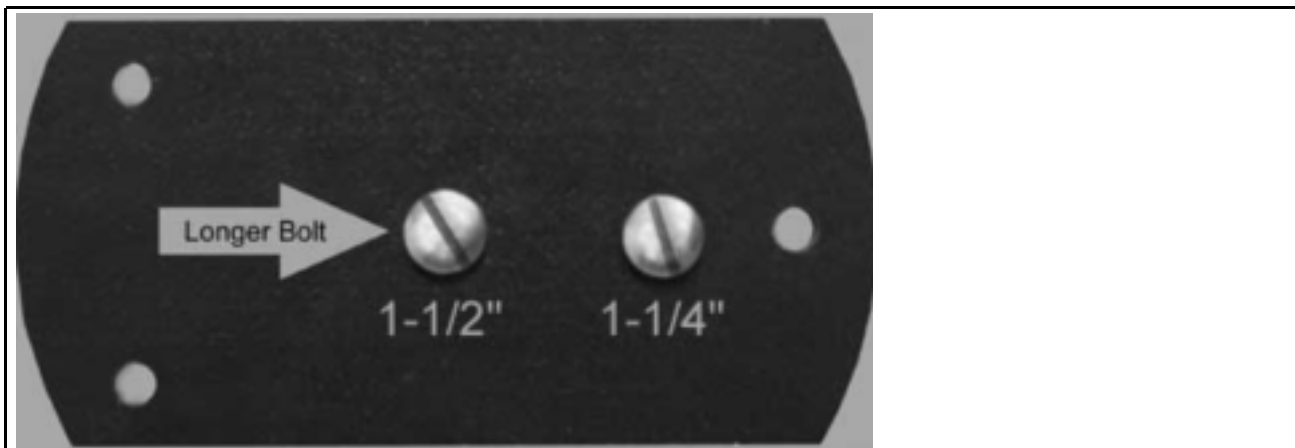


# Instructions For Optional Landscape Tower



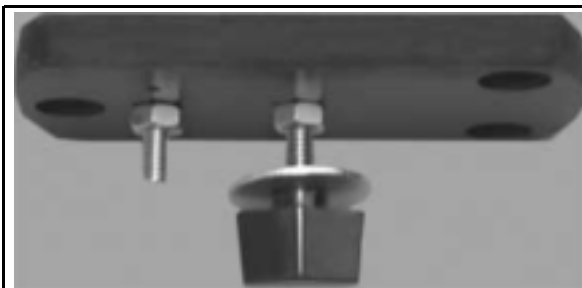
Above is a picture list of the parts you should find to assemble and use the Landscape Tower.



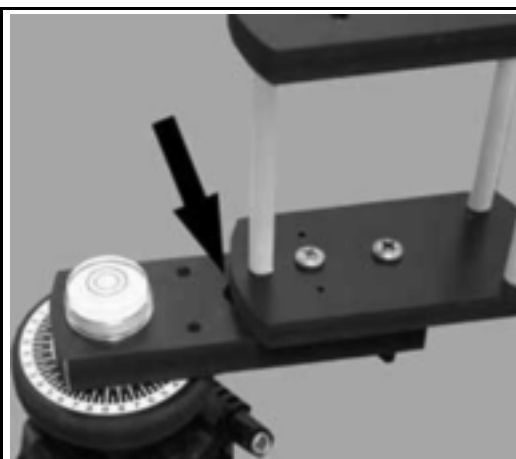
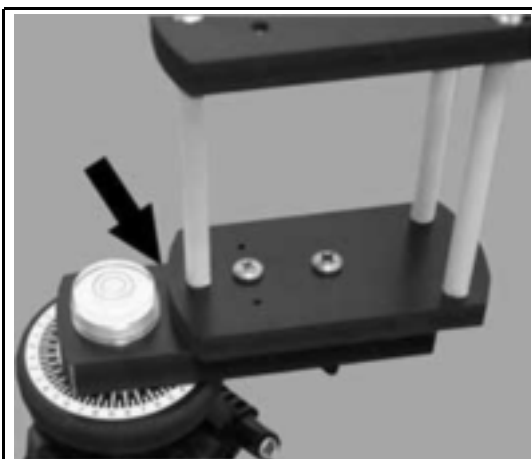
**Step 1.** From the top side of the **Tower Bottom** insert the 1-1/2" and 1-1/4" bolts and then attach and tighten a lock nut to each bolt - **VERY TIGHTLY**.



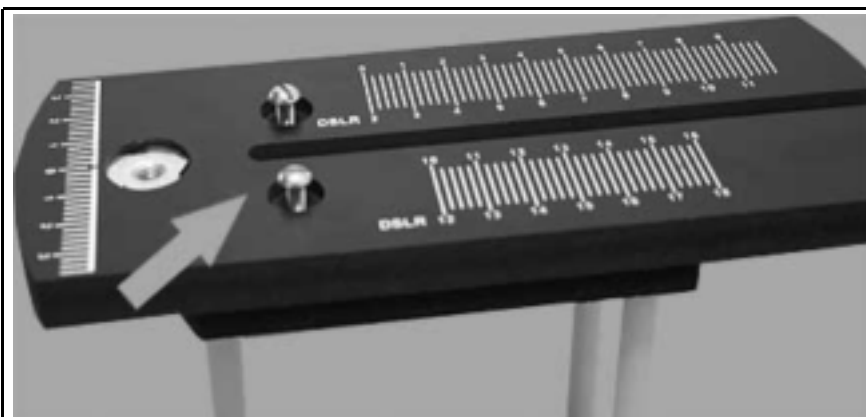
**Step 2.** Next assemble the tower using the 3 - 5" bolts and the plastic tubes as shown in the picture above. Thread lock nuts onto each bolt as shown with arrows above. The top of the bolt heads should be recessed into the top of the tower. **IMPORTANT: When you tighten these bolts make sure the assembly is laying as shown in the picture above - ON A FLAT SURFACE - This will ensure that the tower is not twisted slightly out of shape when the bolts are tight. Do not overtighten nuts.**



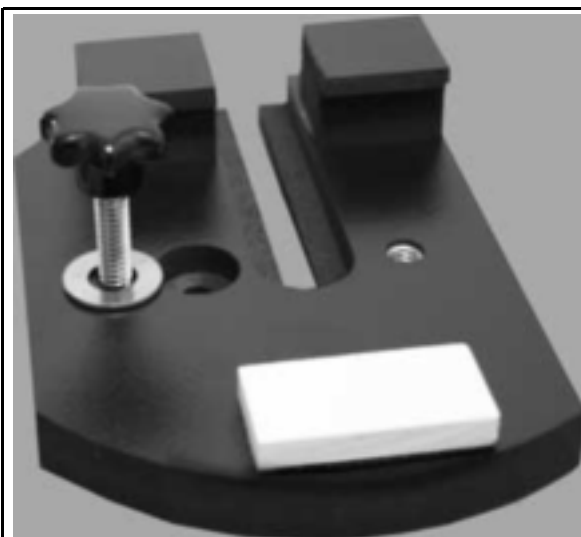
**Step 3.** Attach the Panosaurus Wing-Style Clamping Knob with the 1.25" washer onto the longer center bolt of the Tower Bottom.



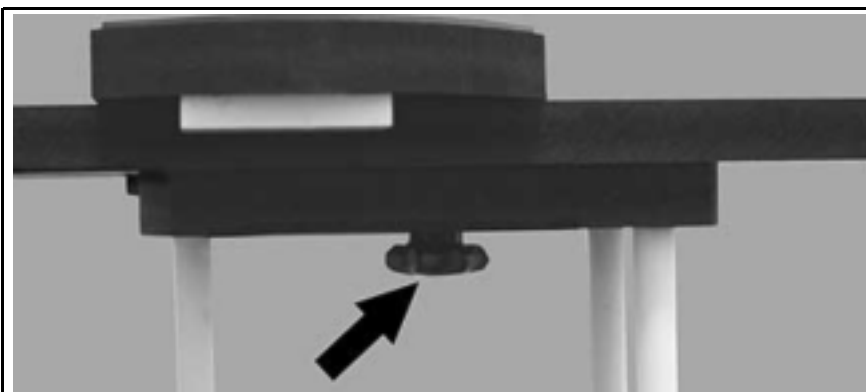
**Step 4.** Attach the Tower to the rotator arm of the Panosaurus as shown above. Depending on the size of your fish eye lens you will either clamp the Tower as far forward as it will slide (for small lenses) or back further for larger lenses. This adjustment is determined when you begin to calibrate for the optical center of your lens.



**Step 5.** Attach the Horizontal Arm of the Panosaurus to the top of the Tower using the two 10-32 bolts that came with the Panosaurus. Make sure the slots of the Arm and the Tower are aligned.



**Step 6.** Attach the clamping knob with a 1" thread along with a washer to your camera mounting block.



**Step 7.** The Camera Mounting Block of the Panosaurus then slides onto the Horizontal arm (After your camera is attached) and is secured with the clamping knob and washer below the top of the tower. You are then ready to find the optical center of your fish eye lens. **(Refer to step 6. of the Panosaurus Instructions)**

